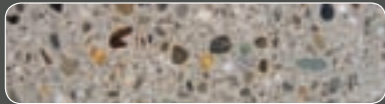




stoneheritage

PolishedConcreteSystem



Garrett Pasquale

P 027 242 3865
F 03 441 3410
E info@stoneheritage.co.nz
PO Box 2193, Wakatipu
www.stoneheritage.co.nz



HARDER ■ HIGHER QUALITY ■ LONGER LASTING ■ MORE COST EFFECTIVE

THE STONE HERITAGE POLISHED CONCRETE SYSTEM IS UNIQUE

The result is a harder wearing, longer lasting, lower maintenance concrete surface. This is the most advanced polished concrete system on the market.

The Stone Heritage Polished Concrete System is a sequence of 20 steps that uses a combination of diamond grinding machinery and advanced Lithium sealants. The sealants are applied during the polishing process to penetrate deep into the concrete surface. The final sealant application is polished at high speed for a gloss finish.

THE POINT OF DIFFERENCE

Polished concrete by definition can only be achieved at 1800 grit and above. Stone Heritage polishes to 3000 grit!

Standard **Honed concrete** is honed to 300 grit and then a topping coat of polyurethane is applied to give a gloss finish. Polyurethane products are suited for low traffic situations as they tend to wear, mark and scratch easily.

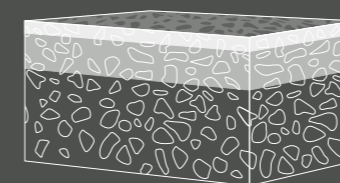
The methods that Stone Heritage use are far superior to traditional honed concrete due to scientific advances in concrete sealant technology. The Stone Heritage Polished Concrete System can be applied to pre-existing and new concrete floors.

The Stone Heritage Polished Concrete System only requires an occasional machine buff every 2 – 3 years which makes this product more cost effective compared to honed concrete. The use of water based, non toxic sealants mean its better for both you and the environment.

THE BENEFITS OF THE STONE HERITAGE FLOORING SYSTEM:

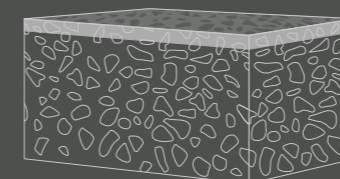
- Easy to clean and maintain
- Scratch resistant and a harder, longer life concrete floor
- Anti-static, unlike polyurethane's that attract dust
- Friction driven; foot traffic increases shine
- Commercial grade advanced Lithium Sealant
- Friendly to the environment – sealant is non toxic
- Thermal mass qualities – non fading
- Cost effective

CROSS-SECTION OF A CONCRETE SLAB USING THE STONE HERITAGE SYSTEM



- ADVANCED LITHIUM SEALANT applied and buffed for added shine and strength
- PENETRATING SEALANT hardens and densifies concrete

CROSS-SECTION OF A CONCRETE SLAB WITHOUT USING THE STONE HERITAGE SYSTEM



- TOPICAL SEALANT only applied, therefore not hardening and densifying concrete